

Thanksgiving Special



UNITED TO GROW FAMILY AGRICULTURE

Farmer's Share of Retail Food Dollar

Did you know that farmers and ranchers receive only 15.8* cents of every food dollar that consumers spend on food at home and away from home?

According to USDA, off farm costs including marketing, processing, wholesaling, distribution and retailing account for more than 80 cents of every food dollar spent in the United States.

Turkey

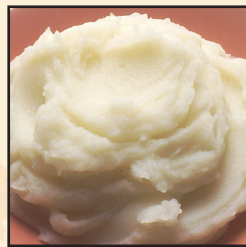
1 Pound



Retail: \$1.78
Farmer: \$0.93

Mashed Potatoes

24 oz. Box



Retail: \$3.90
Farmer: \$0.11

Stuffing

15 Ounce - Cubes



Retail: \$3.39
Farmer: \$0.07

Cranberries

12 Ounces



Retail: \$3.29
Farmer: \$0.31

Apple Cider

1/2 Gallon



Retail: \$4.39
Farmer: \$2.15

Dinner Rolls

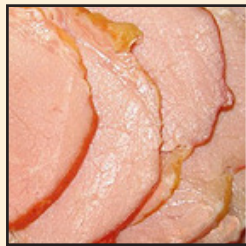
12 rolls



Retail: \$3.00
Farmer: \$0.06

Boneless Ham

1 Pound



Retail: \$4.39
Farmer: \$0.74

Sweet Corn

15.25 oz. Can



Retail: \$0.69
Farmer: \$0.03

Pumpkin Pie

30 oz., Mix



Retail: \$3.89
Farmer: \$0.25

Steak

1 Pound



Retail: \$9.89
Farmer: \$2.24

Green Beans

1 Pound



Retail: \$1.49
Farmer: \$0.85

Sweet Potatoes

1 Pound



Retail: \$1.69
Farmer: \$0.24

Tomatoes

1 Pound



Retail: \$2.79
Farmer: \$0.36

Carrots

5 Pounds



Retail: \$3.89
Farmer: \$1.52

Beer

6-Pack Cans



Retail: \$6.99
Farmer: \$0.05

Farmer's share derived from USDA, NASS "Agricultural Prices," 2015.

~Prices based on September 2015 data

Retail based on Safeway (SE) brand except where noted.

*Figure according to U.S. Department of Agriculture Economic Research Service

November 18, 2015