



# National Farmers Union

---

## FOUNDATION

---

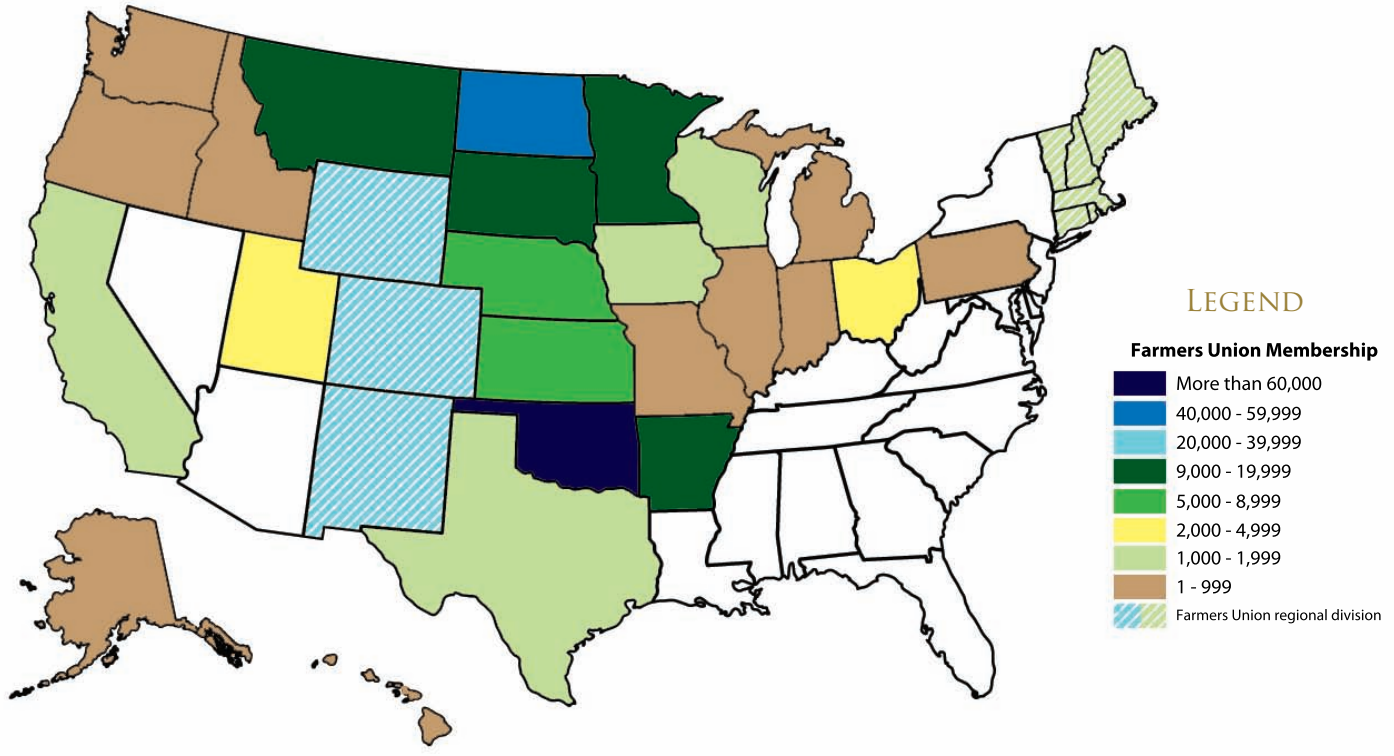
### 2012 Annual Report





# NATIONAL FARMERS UNION MEMBERS

National Farmers Union is organized in 33 states, with members in every state.  
 Map: Membership in organized divisions



**NFU MISSION** - To advocate for the economic and social well-being and quality of life of family farmers, ranchers, fishermen and consumers and their communities through education, cooperation and legislation. NFU advocates sustainable production of food, fiber, feed and fuel.

**NFU FOUNDATION MISSION** - To empower people to educate our youth, neighbors, media and policymakers of the social, economic and cooperative contributions of family agriculture



## NFU AND NFUF PRESIDENT'S MESSAGE



Education is the foundation upon which National Farmers Union's early leaders built a successful organization that has stood the test of time for 110 years.

In keeping with this rich history, National Farmers Union established the National Farmers Union Foundation, a 501(c)(3) entity, to further our education goals.

The Foundation's mission is to educate our youth, our neighbors, media and policymakers of the social, economic and cooperative contributions of family agriculture. It means we empower people to better live their lives, contribute to their communities, and develop their natural leadership abilities.

Through our Foundation, we support educational programs that provide leadership camps for young people from across the country. We support scholarships and conferences on cooperatives for college students. We provide support for our National Youth Advisory Council members to attend leadership training in Washington, D.C. No other organization does more to encourage its members of all ages to have a voice in grassroots development. No other organization has this history or this commitment to rural America.

Our Foundation is making it possible for adults to participate in the international Farmer-to-Farmer program, Beginning Farmers Institute, Women's Conference, and other adult learning opportunities. The more informed farmers and ranchers are, the better they are able to use grassroots activism to make positive changes in their lives.

Other organizations may teach about a specific cooperative business that complements their operations. Only Farmers Union focuses on the overall cooperative business structure in the U.S. Cooperation really is a way of life for us.

The NFU Foundation focuses on educating people of the value of family farm agriculture. Our efforts are tailored to nurturing rural leaders and engaging grassroots activists. We are constantly expanding our outreach. In the future, we expect to send more students to the College Conference on Cooperatives, utilize e-learning for all ages, expand our Beginning Farmer Institute and reach out to more collegiate chapters.

Everyone who contributes to the Foundation is making a difference, and one that will last for a lifetime.

Sincerely,

Roger Johnson, President  
National Farmers Union/National Farmers Union Foundation

## TABLE OF CONTENTS

Strategic Plan.....	4
NYAC.....	5
All-States Camp.....	6
Youth Education.....	7
Cooperative Education.....	8
Women in Ag.....	9
Beginning Farmer.....	10
International/Farmer.....	11
Energy Education.....	12
Conservation/Research.....	13
Evening for Education.....	14
Planned Giving/Curriculum.....	15
Intern/Scholarships.....	16
Board/Staff.....	17
Financials.....	18-21
Private Giving.....	22-23



## 2011-2013 NFUF Goals

The National Farmers Union (NFU) Foundation Board of Directors and staff underwent strategic planning for the organization in 2010. The Board and staff are working toward meeting the goals outlined in the plan.

1. Expand education and leadership programs
2. Create additional cooperative education
3. Expand the NFU College Conference on Cooperatives
4. Increase issue and consumer outreach education
5. Collaborate with other organizations
6. Expand our international education focus

Farmers Union has a storied history of excelling at youth programs and camps. NFU is improving on this tradition by **adding new programs in adult education:** Beginning Farmer Institute, the Women's Leadership Conference and the increased distribution of curriculum and consumer education.

During the past year, we focused strongly on cooperative education and highlighted the International Year of Cooperatives. Also, NFU partnered with Annie's Project through modeling of our women's education to reflect increased

*(above photo) 2011-2012 National Youth Advisory Council members during their leadership training in Washington, DC. Shown above from the left is Jacob Hanson-Flores, Minn., and Mason Farber, S.D. Emily Albrecht and Rochelle Bitz, N.D., Joe Rosenbrock and Ramón Portuese, Colo.*

learning in the areas of risk as defined by the USDA. We have also worked with Farmer Veteran Coalition, National Farm 2 School, NCBA and more.

The National Youth Advisory Council (NYAC) has a more prestigious role and has expanded its learning opportunities in Washington, D.C.

# NATIONAL YOUTH ADVISORY COUNCIL

Campers attending All-States Leadership Camp **elected six of their peers to represent them** on the National Youth Advisory Council (NYAC). The 2011-2012 NYAC is comprised of Emily Albrecht and Rochelle Bitz, N.D., Ramón Portuese and Joe Rosenbrock, Colo., Jacob Hanson-Flores, Minn., and Mason Farber, S.D. NYAC traveled to Washington, D.C., during NFU's annual fall fly-in to plan educational activities for the 2012 All-States Camp and participate in leadership training. Earlier in the year, the 2011-2012 NYAC attended NFU's annual convention in Nebraska. NYAC members serve as pages during the convention and complete camp planning.

## THE NATIONAL YOUTH ADVISORY COUNCIL REPRESENT 15,000 OF THEIR PEERS ACROSS THE U.S.



Jacob Hanson-Flores, Minn., is shown during his leadership training in the nation's capital in Sept. 2011. Jacob is a 2011-2012 NYAC member.

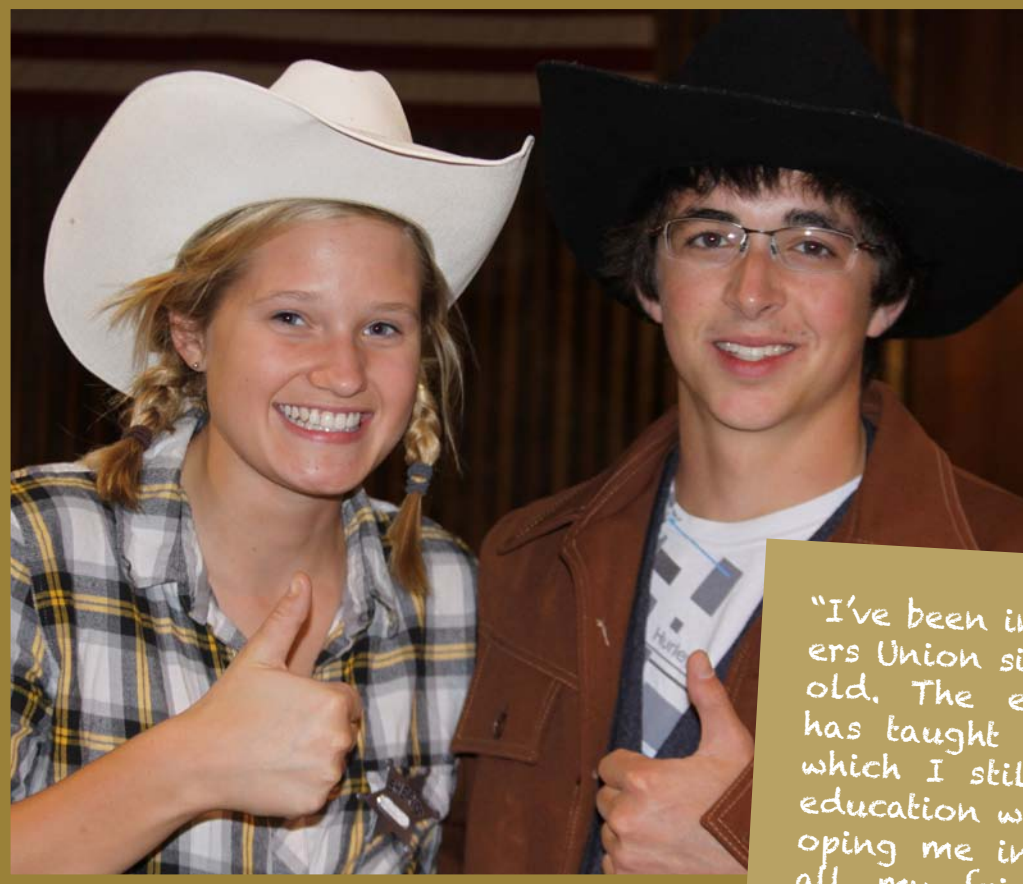


Recently elected to the 2012-2013 National Youth Advisory Council (NYAC) were (front row from left): Briana Green of Mont., Bre Stafford of Colo., (second row from left): Patrick Swift of N.D., Mitchell Farmer-Lies of Minn., and Cole Musland of N.D., William Felzien of Colo.

"It is important to be involved in Farmers Union youth program for all of its life experiences. Being involved not only broadens one's perspective about Farmers Union, but further expands his or her view about life in general. It may be food production, policy, education or cooperation - everyone benefits from our educational programs. The memories and friends made at our youth programs are priceless!"

- Ramón Portuese, NYAC

# NFU ALL-STATES LEADERSHIP CAMP



"I've been involved with Farmers Union since I was six years old. The education program has taught me valuable skills which I still use today. The education was vital for developing me into a leader. To all my friends and all my mentors, thank you!"

- All-States Camp Alumnus

Leaders in the Farmers Union youth program from across the nation attended All-States Camp at NFU's Education Center July 24-29 in Bailey, Colo. The 2012 camp followed the theme "Cooperation Across the Nations." Presentations were made by William Nelson, president of CHS Foundation, Claudia Svarstad, NFU vice president; and Andrew Jacobs of Co-Bank.

One of America's "Biggest Losers" inspired young adults from across the country with his winning ways during National Farmers Union's All-States Leadership Camp held July 24-29 near Bailey, Colo. Rulon Gardner won a gold medal at the Olympics. He grew up on his family's dairy farm in Wyoming where he learned the value of hard work and teamwork. Gardner has spoken at All-States for nine years.

Campers also heard from a USA Paralympic athlete with cerebral palsy. He too had to **overcome difficult obstacles in order to succeed.**

At the education center, staff from the U.S. Centers for Disease Control and Prevention's (CDC) Influenza Division led campers through a simulated influenza outbreak. The simulation taught campers about the role of public health and how to prevent and control illness through vaccination, or rapid treatment in the absence of vaccine, along with simple everyday measures such as hand washing, covering coughs and sneezes and staying home when sick.

Campers also created, capitalized and liquidated a camp co-op store during the week.

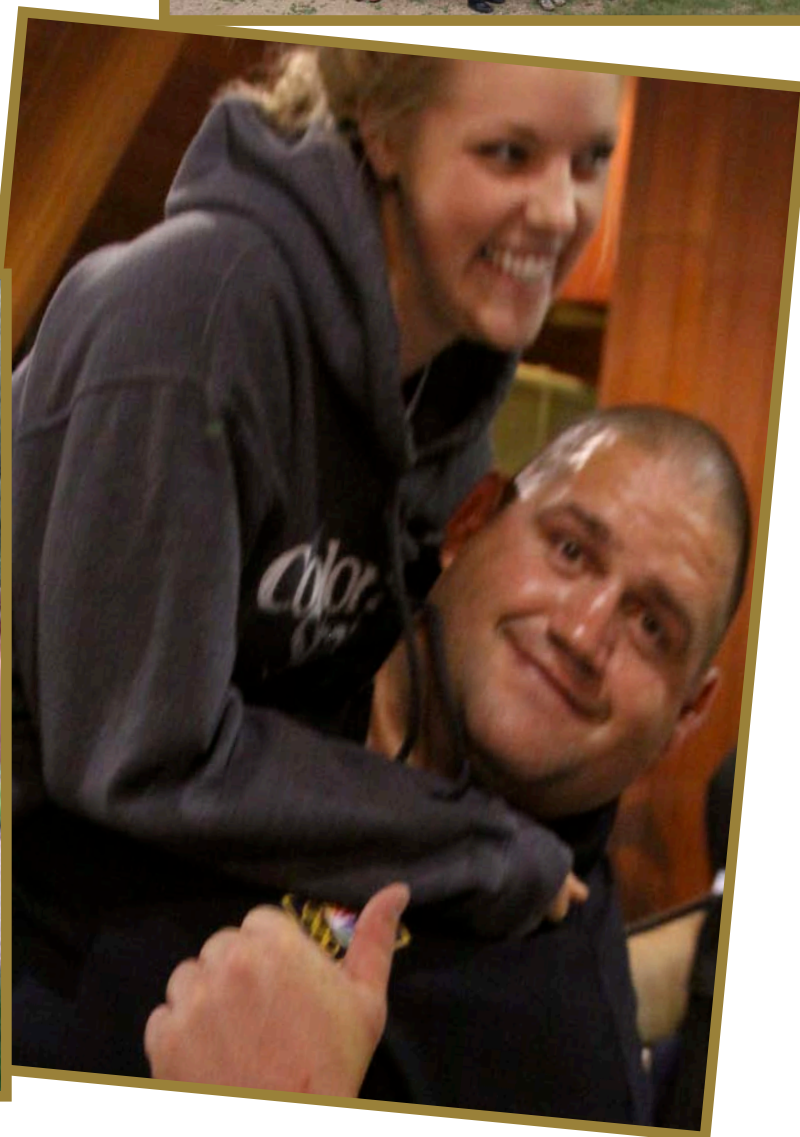
**The 2012 NFU All-States Camp was supported in part by CHS Foundation**

# YOUTH EDUCATION

Education is the foundation upon which National Farmers Union's early leaders built a successful organization that has stood the test of time for more than **100 years**.

## 75TH ALL-STATES CAMP REUNION

In 2011, National Farmers Union members celebrated the 75th anniversary of the All-States Leadership Camp in Bailey, Colo. NFU President Roger Johnson told guests that the All-States Camp exemplifies Farmers Union's commitment to education. Johnson, a former All-States camper and member of the National Youth Advisory Council, said that many long-lasting relationships are formed there. Tom Giessel, NFU's historian, helped prepare the celebration of the camp's anniversary.



## COLLEGIATE FARMERS UNION CHAPTERS

NFU is proud to have collegiate chapters in several states. The young people involved have **shown their leadership qualities** along with their desire for effective advocacy in their lives.

# COOPERATIVE EDUCATION

## COLLEGE CONFERENCE ON COOPERATIVES

Thanks to the organizational efforts of Farmers Union and the CHS Foundation, Minneapolis has become a Mecca for college students and instructors interested in **cooperative education**. The annual CCOC draws students from across the Midwest. The students tour several cooperatives including CHS, Inc., REI and 7500 York Cooperative, the nation's first cooperative retirement complex. The event attracts nearly 100 students. Presenters included those from traditional and value-added agricultural cooperatives, as well as perspectives from electric, housing, and worker-owned co-ops. Students also heard from consumer cooperatives such as credit unions and food co-ops.



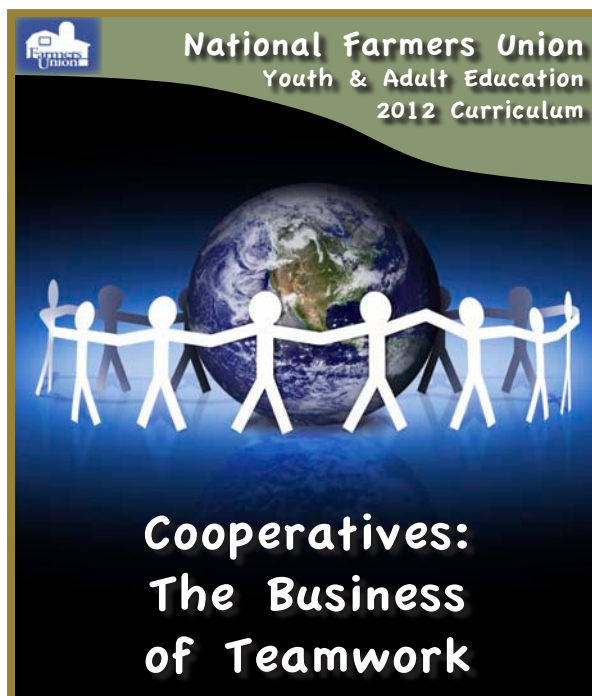
The 2012 College Conference on Cooperatives was supported by CHS Foundation, CoBank, The Cooperative Foundation, Farmers Union Industries Foundation, SPIRE Federal Credit Union, CHS, Inc., National Council of Farmer Cooperatives Education Foundation, Minnesota Cooperative Education Foundation, Minnesota Farmers Union, Federated Youth Foundation, Organic Valley, NFU and the NFU Foundation.

## COOPERATIVE MEMBER EDUCATION

During the NFU **Convention** March 4-7, 2012, a general session was held: **"2012: United Nations' International Year of Cooperatives."** William Nelson with CHS Foundation served as facilitator of the educational discussion that was attended by nearly 100 convention goers. Panelists included Amy Coughenour Betancourt, NCBA; Annie Cheatham, NEFU; Greg McKee, NDSU; Rod Kelsay, ACE and Tom Giessel, NFU Historian.

## COOPERATIVE CURRICULUM

The 2012 NFU curriculum of **"Cooperation: The Business of Teamwork"** was timely as 2012 is the International Year of Cooperatives. The curriculum has been enhanced with additional lessons for collegiate and adult students. In addition, NFU developed a separate adult-focused curriculum which was available to all immediately as a free download. These lessons plans were made possible by funding from CHS Foundation.





# WOMEN IN AG

The NFU Women's Conference has been retooled. Nearly 40 farm women from six states gathered June 21 - 23 at the NFU Education Center in Bailey, Colo., for a three-day women's conference based in part on the well-respected "Annie's Project" risk management education program.

Participants learned about family farm finances, budgeting and cash flow, cooperatives, marketing, farm transfer and estate planning, business planning, leadership assessment and skills, generational issues, and action planning.



"Amazing program. I can't wait to tell everyone I know about it."

"I feel this is a great seminar and hope you are able to provide it each year."

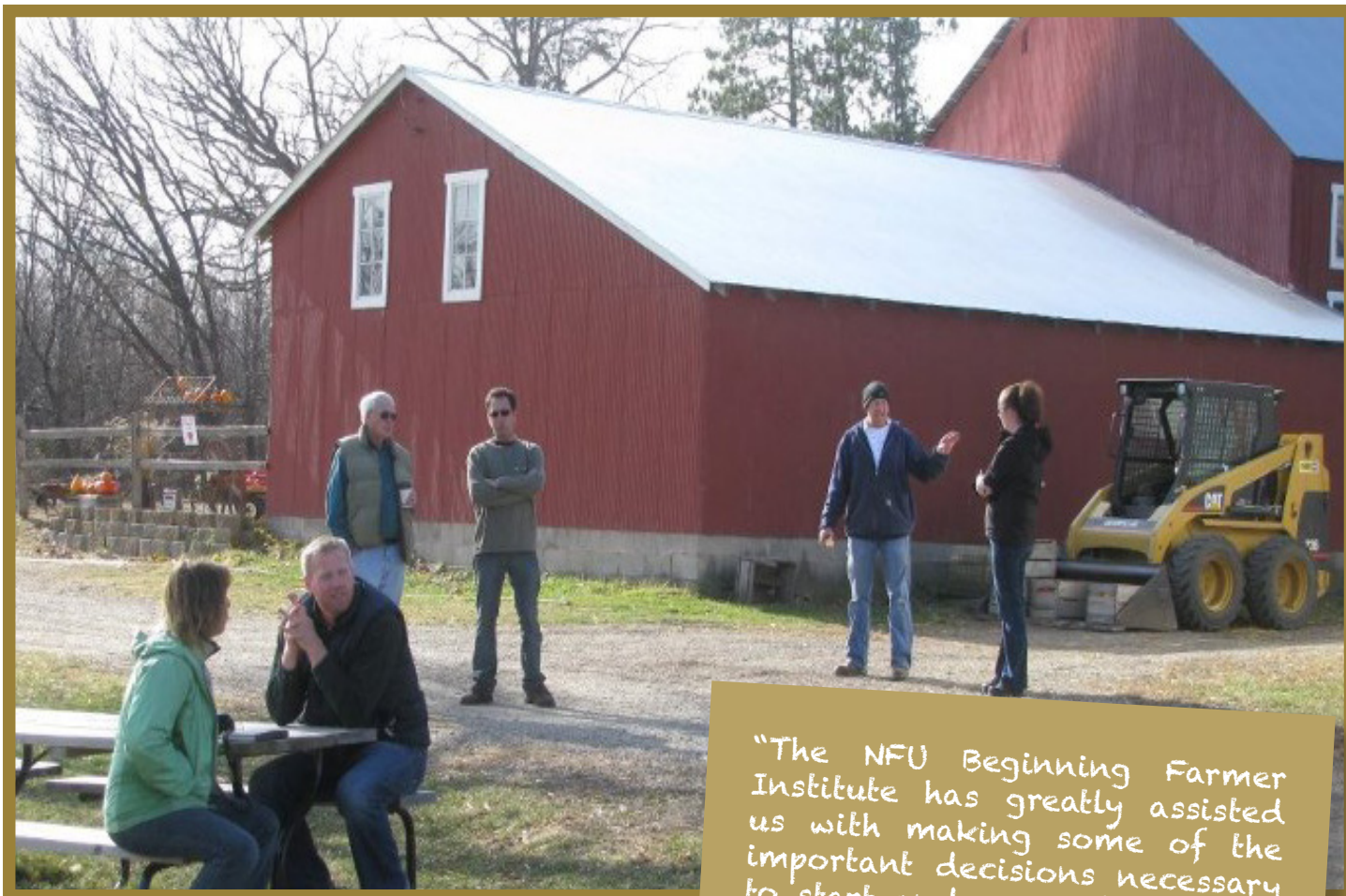
"Thanks for all of the great speakers. I learned a lot that I can take home to our farm!"

- Women's Conference Alumni

USDA Deputy Under Secretary for Marketing and Regulatory Programs Rebecca Blue told the group that she was glad to see women networking and encouraged farm women to speak out and become fully engaged in their family operations.

The 2012 NFU Women's Conference was supported by Farm Credit, CoBank, Farmers Union Industries Foundation and the NFU Foundation.

# BEGINNING FARMER INSTITUTE



"The NFU Beginning Farmer Institute has greatly assisted us with making some of the important decisions necessary to start and succeed with our farm enterprise. The varied backgrounds of the participants made it a truly unique and engaging experience. We especially appreciated the focus on mutual respect across agriculture, and cooperation as a solution to help meet these needs in order to keep family farming viable into the future."

- Jeff Eschmeyer, BFI 2011

Participants selected for NFU's Beginning Farmer Institute 2012 include Eric Kornacki of Colorado, Nicole Mroz of Florida, Natalie Cash of Hawaii, Thomas Burkhead of Iowa, Laura Arvidson and Benjamin Peterson of Montana, Bryn Bird and Lee Bird of Ohio, Steve Wolterstorff of South Dakota, and Kent Wright of Washington.

Participants in the inaugural 2011 Institute were Erin Schneider of Wisconsin, Tess Brown-Lavoie of Rhode Island, Jeff and Deb Eschmeyer of Ohio, Aeric and Rex Reilly of Montana, Joseph and Ida DeFrancesco of Connecticut, and Barbara Marty and Justin Fehringer of Colorado.

Institute participants learn about financial planning, **farm management**, and farmer-owned cooperatives.

In addition, they will help determine the agenda based on what they have identified as important to their operation. Topics include marketing, understanding USDA programs, renewable energy, record keeping, farm transitioning and understanding the local food system.

The NFU Beginning Farmer Institute is supported by Farm Credit, CHS Foundation and the NFU Foundation.

# FARMER-TO-FARMER

## FARMER-TO-FARMER

A PROGRAM OF THE UNITED STATES  
AGENCY FOR INTERNATIONAL  
DEVELOPMENT (USAID)



Working through NFU's partnership with the National Cooperative Business Association, NFU Vice President Claudia Svarstad, New England Farmers Union (NEFU) President Annie Cheatham and Jessica Cook, NEFU member and farm energy program manager, traveled to the **Republic of Senegal** to work with the country's largest farm organization, assisting with advocacy, planning, membership, communication, and education.

Kansas Farmers Union President Donn Teske also worked with Senegalese farmers on improving their production and marketing skills through the program.

Two additional emissaries are traveling in the Summer 2012 to the area, including a 2011 Beginning Farmer Institute graduate.





The NFU Foundation received generous support from the Energy Foundation to reach out to rural landowners and community members to educate them about the long-term value of renewable energy development. Energy Foundation proceeds sponsored a multi-state Renewable Energy Tour in the Upper Midwest, which was attended by hundreds to learn about the *benefits of energy derived from wind, solar and biomass.*



The David and Lucille Packard Foundation has granted the NFU Foundation with funding to conduct **outreach and educational seminars on the benefits of conservation practices** for landowners and their rural communities. Through participation in national seminars, trade shows and regional conservation workshops, the NFU Foundation has been able to communicate with several hundred producers about critical public conservation programs.

The NFU Foundation supported the completion of groundbreaking research and analysis by Dr. Daryll Ray and his team at the University of Tennessee Agricultural Policy Analysis Center, which indicated that the cost burdens of farm bill programs could be reduced while providing a **strong safety net** for the nation's farmers and ranchers by implementing market driven inventory system incentives for farmers to volunteer to hold grain during low price periods.

# EVENING FOR EDUCATION



The third “Evening For Education” fundraiser was held in conjunction with NFU’s 2012 convention in Omaha, Neb. The event generates funds which support Farmers Union’s education programs. These funds, in part, make it possible for the National Youth Advisory Council to participate in

educational events held during NFU’s annual fly-in and All-States Camp.

The gala is attended annually by nearly 350 people and raised more than \$45,000 this year.

# PLANNED GIVING

NFU Foundation is currently considering developing a planned giving program to create long-term sustainability models for its development plans. This is a method of supporting non-profits that enables philanthropic individuals to make gifts other than by donating from their income. Planned gifts are often part of the donor's estate.

GivingPoint, a Fargo based fundraising firm, gave an educational presentation on planned giving at the National Farmers Union Convention in Omaha, Neb. The presentation was on gift planning and rural philanthropy.



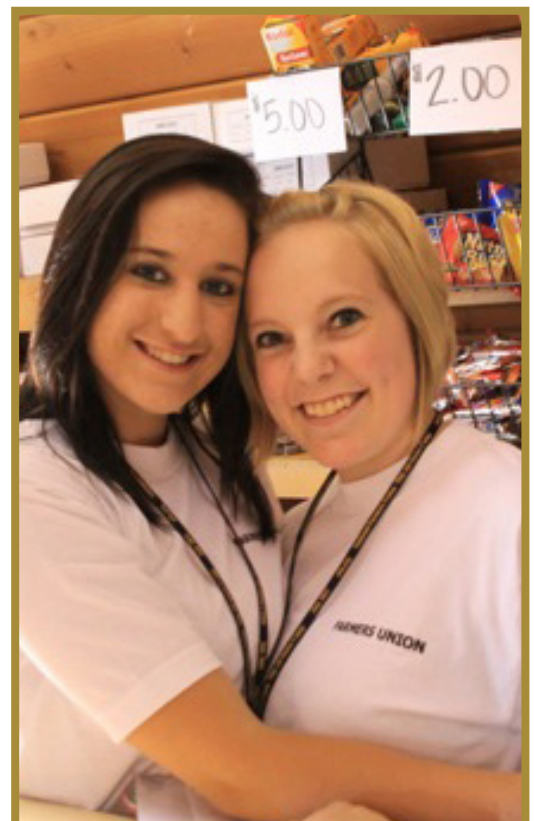
# CURRICULUM FOR CAMPS, CLASSROOMS

In 2011, National Farmers Union's education curriculum of "Growing Good Taste" was especially timely. The Obama Administration and USDA placed renewed emphasis on promoting nutritional balance as a way to address the increasing health concerns (and waistlines) of Americans. The curriculum is designed to engage students using a variety of hands-on activities. Multiple lessons are available for youth in grades 1-2, 3-5, 6-8, and 9-12, along with separate lessons for collegiate and adult students. This ag curriculum is made available online free to instructors. Advisors who visited the NFU booth at the National FFA convention were enthused to have this



curriculum as a resource.

Curriculum development made possible by support from CHS Foundation.



# INTERNSHIPS AND SCHOLARSHIPS



## INTERNSHIPS

NFU's **paid intern program** allows college students with an interest in rural communities and agriculture to gain experience by working on Farmers Union's many initiatives. Internship areas include communications, cooperative education, economics, general education, membership marketing, policy research, and political science. Graduate students or those looking for work experience are invited to apply for an extended internship in the non-summer months.

"During my summer in Washington, the life lessons I have learned, the experiences I have gained, and the people I have met have all been more than I could have ever expected."

"In addition to the tremendous amount that I have learned about agriculture and politics, I have also learned a lot about life and myself."

"During my internship, I had the opportunity to attend multiple briefings, hearings, receptions and more which helped grow my professional network."

"I will never forget my time with NFU."

"We have a really great staff at NFU...more of a family away from home really."

- Former NFU Interns

## SCHOLARSHIPS

National Farmers Union annually distributes **thousands of dollars of scholarships each year** to students furthering their formal education. We presently award several \$1,000 Stanley Moore National Scholarships to Farmers Union members and one or two Hubert K. Seymour Scholarships ranging from \$1,000 to \$2,000 total.





# NFU FOUNDATION BOARD OF DIRECTORS

Roger Johnson  
President

Claudia Svarstad  
Vice President

Bill Stevenson  
Chair

Doug Peterson  
Vice-Chair

Norbert Brauer  
Illinois

Alan Merrill  
Montana

Doug Sombke  
South Dakota

Wes Sims  
Texas

Terry Detrick  
Oklahoma

Roger Wise  
Ohio

Sue Carlson  
North Dakota



**National  
Farmers  
Union**  

---

**FOUNDATION**



## NFU DIRECTOR OF EDUCATION

National Farmers Union Director of Education Maria Miller (photo: center with NYAC) develops educational outreach programs for members of all ages, and for audiences who share a vested interest in agriculture and cooperatives. For 25 years, she lived and worked on a family farm. She began her career with Farmers Union as a state organization editor and was actively involved in developing a state youth program. She is a member of the National Farm to School advisory board and the National Farmer Veteran Coalition Fellowship advisory panel. Prior to working for NFU, Miller was an independent agribusiness insurance agency owner and an award-winning photographer and journalist. She brings experience in fundraising and was the founder of a start-up foundation.

## NFU STAFF

Roger Johnson  
President

Claudia Svarstad  
Vice President

Dave Velde  
General Counsel

Linda Kendall  
Office Manager

Chandler Goule  
VP, Government Relations  
cgoule@nfudc.org

Jeff Knudson  
VP, Operations  
jknudson@nfudc.org

Leigh Slayden  
VP, Membership  
lslayden@nfudc.org

Robert Carlson  
VP, International Relations  
rcarlson@ndfu.org

Melisa Augusto  
Director of Communications  
maugusto@nfudc.org

Brittany Jablonsky  
Government Relations Rep.  
bjablonsky@nfudc.org

Maria Miller  
Director of Education  
mmiller@nfudc.org

Sue Arends  
Assistant to the Board  
sarends@nfudc.org

Dan McEvily  
Communications Coordinator  
dmcevily@nfudc.org

Jan Ahlen  
Government Relations Rep.  
jahlen@nfudc.org

Mike Stranz  
Government Relations Rep.  
mstranz@nfudc.org

Guy Rusche  
Director of Development  
grusche@alliancecom.net

Justin Sherlock  
Executive Assistant  
jsherlock@nfudc.org

Andre Owens  
Database Administrator  
aowens@nfudc.org

Martha Van Dale  
Director of Finance  
mvdale@nfudc.org



**National Farmers Union Foundation  
Statement of Financial Position  
As of December 31, 2011**

**Assets**

Current Assets

Cash	284,681
Accounts Receivable	1,500
Prepaid Expenses	6,257

Total Current Assets	292,438
----------------------	---------

Other Assets

Stanley Moore Scholarship Fund	101,665
General Investment Fund	278,532

Total Other Assets	380,197
--------------------	---------

<b>Total Assets</b>	<b>672,635</b>
---------------------	----------------

**Liabilities**

Accounts Payable	36,241
Deferred Revenue	6,000

Total Liabilities	42,241
-------------------	--------

**Fund Balance**

Undesignated Net Assets	326,470
Temp Restricted Net Assets	303,924

Total Fund Balance	630,394
--------------------	---------

<b>Total Liabilities and Fund Balance</b>	<b>672,635</b>
-------------------------------------------	----------------



**National Farmers Union Foundation  
Statement of Activities  
For the Twelve Months Ending December 31, 2011**

**Operational Income**

Contributions	143,060
Interest and Dividends	14,471
Realized Gain Loss on Investments	16,790
Registration Income	5,000
Net Assets Released from Restrictions- Grants	458,159
	-----
<b>Total Operational Income</b>	<b>637,480</b>
	-----

**Expenditures**

Salary and Fringe	173,964
Professional Fees/Consulting	93,130
Travel Expenses	73,177
Conference Expenses	74,022
Misc Fundraising Expenses	20,393
General Office Expense	3,171
Sponsorship	56,133
Grant Disbursement	92,500
Scholarship Disbursement	6,000
Investment Fees	1,430
	-----
<b>Total Expenditures**</b>	<b>593,920</b>
	-----

**Income (Loss) from Operations**

43,560

**Non-Operational Income**

Unrealized Gain (Loss) on Investments	(38,423)
	-----

**Total Non-Operational Income (Loss)**

5,137

Grant Revenue	320,050
Net Assets Released from Restrictions- Grants	(458,159)
	-----

Change in Temporarily Restricted Net Assets	(138,109)
	-----

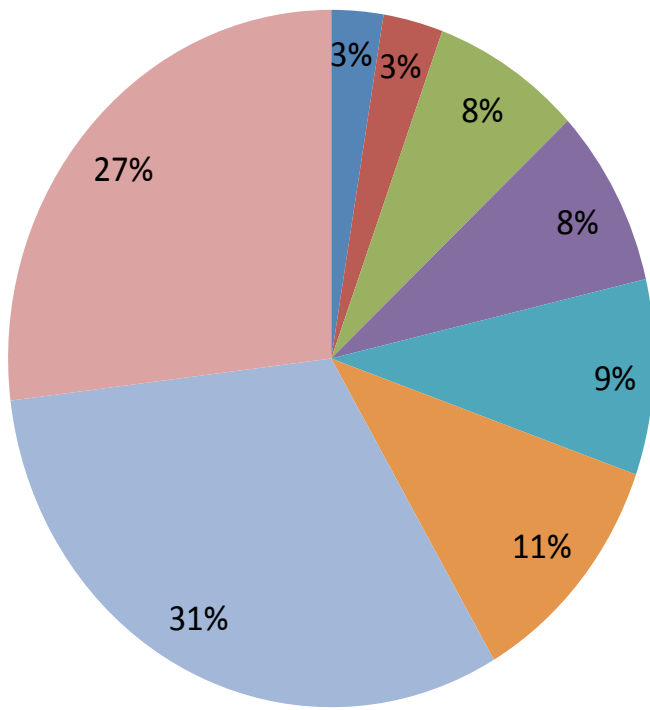
Change in Net Assets	(132,972)
Net Assets- Beginning of Year	763,366
	-----

**Net Assets- End Of Year**

630,394

\*\*Total Expenditures include \$432,353 of Program Service Expense and \$161,567 of Supporting Service Expense.

## 2012 Estimated Expenditures



- National Youth Advisory Council
- Women's Conference
- Beginning Farmers Institute
- Energy Education Program
- All States Camp
- Collegiate Conference on Cooperatives
- Conservation Education Program
- Education Program Administration

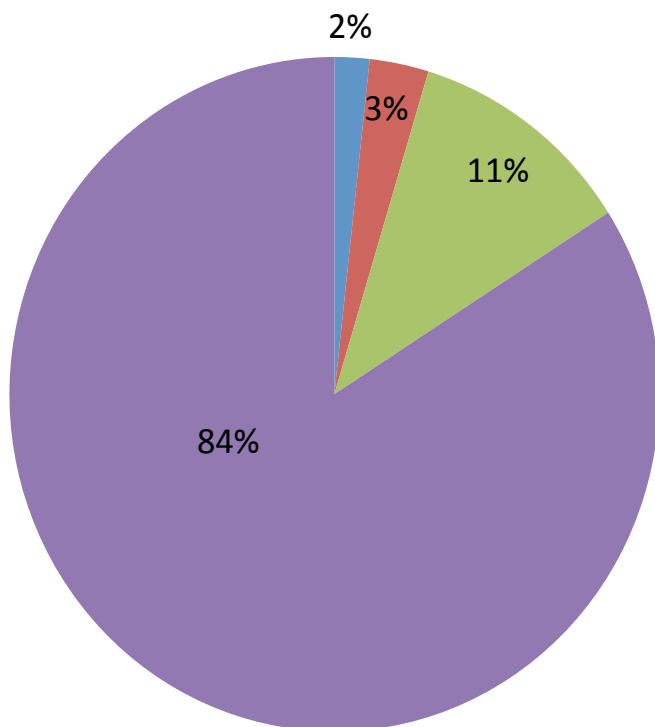


### EXPENDITURES

National Youth Advisory Council	\$14,404.00
Women's Conference	16,621.00
Beginning Farmers Institute	41,567.00
Energy Education Program	46,000.00
All-States Camp	50,363.00
College Conference on Cooperatives	62,238.00
Conservation Education Program	174,880.00
Education Program Administration	149,649.00
<b>Total Estimated Expenditures</b>	<b>\$555,722.00</b>

*Note: NFUF also receives in-kind donations which vary from auction donations to volunteers to facilities use.*

## 2012 Estimated Revenue and Net Assets Released from Restriction



- Restricted Contributions
- Registration Fees
- Unrestricted Contributions
- Grants Received/Released

### REVENUE

**Registration Fees** **16,330.00**

**Unrestricted Contributions** **62,651.00**

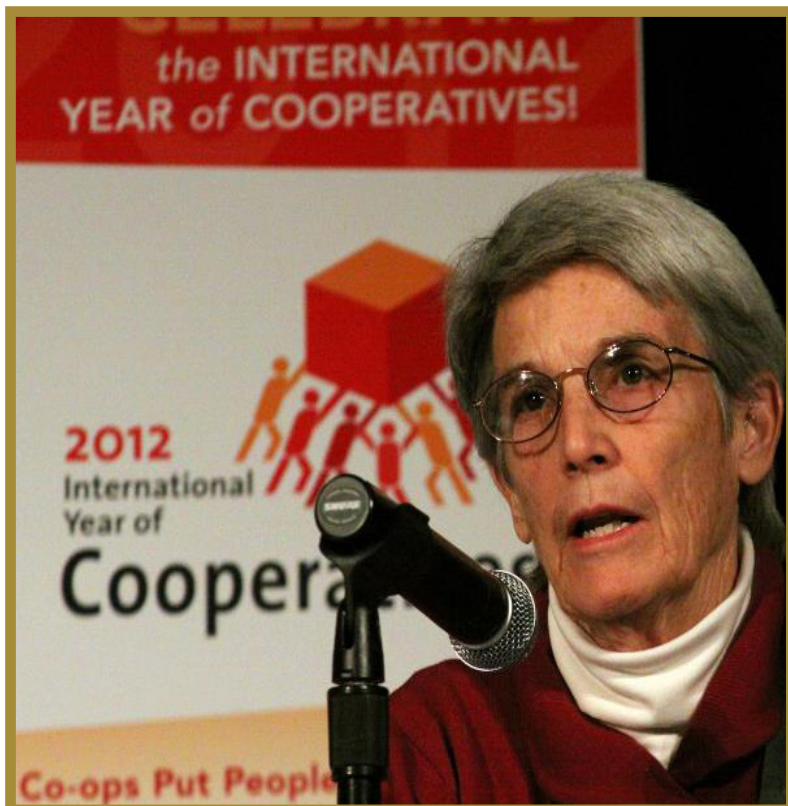
**Restricted Contributions** **9,655.00**

MN Coop Education Fdn	300.00
Sheridan Ross	300.00
MN Farmers Union Fdn	480.00
SPIRE Federal Credit Union	500.00
Federated Youth Fdn Inc	575.00
CoBank	1,000.00
NCFC Education Foundation	1,000.00
The Cooperative Foundation	2,500.00
CHS Foundation Honorarium	3,000.00

**Grants Received/Released** **467,086.00**

Annie's Project	250.00
CoBank	5,000.00
FUMPA Foundation	9,700.00
Energy Foundation	46,000.00
Farm Credit Council	66,000.00
CHS	79,700.00
Packard Grant	174,880.00
NFU and Subsidiary Support	85,556.00

**Total Estimated Revenue** **\$555,722.00**



# PRIVATE GIVING

## MORE THAN \$2,500

North Dakota Farmers Union  
Wisconsin Farmers Union  
Roger Johnson  
Chandler Goule

## \$1,000 - \$2,500

Claudia Svarstad  
Dale Nielson  
Darin VonRuden  
Dennis Stromme  
Leigh Slayden  
Midwest Agency  
Minnesota Farmers Union Insurance  
Montana Farmers Union  
Montana Farmers Union Insurance  
Nebraska Farmers Union Foundation  
North Dakota Farmers Union Service Association  
Ohio Farmers Union  
Oklahoma Farmers Union  
Rocky Mountain Farmers Union  
Rocky Mountain Farmers Union Service Association  
South Dakota Farmers Union Service Association  
Texas Farmers Union  
Wayne Bartscher

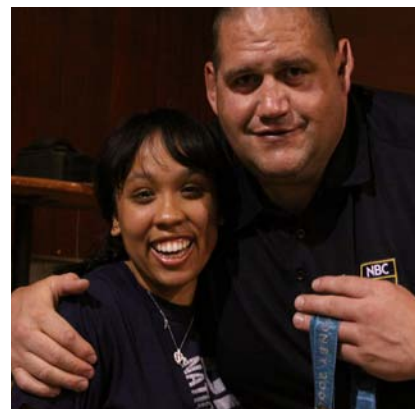
## \$500 - \$1,000

Ben Rainbolt  
Bob Kuylen  
Doug Peterson  
Doug Sombke  
Dragon Fly Cove Farm  
Gordon Stine  
Guy Rusche Family  
Ida DeFrancesco  
Janet Nelson  
John Hansen  
Minnesota Farmers Union  
Missouri Farmers Union  
Porter Creek Winery  
Robert Junk  
Stan Brown  
Tom Giessel  
Wayne Soren  
Woody Barth

## \$100 - \$500

Alan Bergman  
Alan Merrill  
Alan Perish  
Alaska Farmers Union  
Alyssa Mohlman  
Anita Nein  
Barb Marty  
Bill Courtmage  
Bill Heffernan

Bob and Maria Miller  
Kjelland  
Bonnie Waltemath  
Brandon Spevacek  
Brett Dailey  
Buster Brown  
California Farmers Union  
Cleta Felzien  
Colin Sundquist  
Curtis Liles  
David Coker  
David Teigen  
Deb Jakubek  
Donn Teske  
Donna Dailey  
Ellen Linderman  
Gail Temple  
Garret Bischoff  
Gary Wertish  
Henry Nagamori  
Indiana Farmers Union  
Iowa Farmers Union  
Jeff Van Nortwick  
Jeremiah Goins  
Jeremy Peters  
Jim Krier  
Joaquin Contente  
Joe Augusto  
John Kelly  
Joseph Murray  
Kansas Farmers Union  
Karla Hofhenke  
Larry Birgen  
Larry Lieb  
Larry Strangstalien  
Lee Swenson  
Leslie Rupiper  
Linda Borton  
Lorrie Hanson  
Lowell Schachtsiek  
Martin Kleinschmit  
Mary Jensen  
Marydale DeBor  
Matt Jones  
Melisa Augusto  
Merlyn Hubin  
Michael Stranz  
Middle Branch Farm  
Mike Buis  
New England Farmers Union  
Norbert Brauer  
Pat Bartel  
Phillip Burgart  
Richard Moen  
Richard Oswald  
Richard Schlosser  
Richard Wahlman



Event ticket proceeds, auction items purchased as well as auction items donated were included in giving numbers.

Robert and Sue Carlson  
 Robert Carlson  
 Robert Shumaker  
 Roger Zetocha  
 Roy Stoltenberg  
 Sandra Banish  
 Sandra Meidinger  
 Sarah Lloyd  
 Stephen Wright  
 Steve Harwood  
 Susan Frazier  
 Taylor Brothers Sugarhouse & Creamery  
 Ted Thieman  
 Ted Winter  
 Terry Detrick  
 Terry Mrnak  
 Terry Sestak  
 Thomas Coudron  
 Tim O'Connell  
 Tom Buis  
 Utah Farmers Union  
 Wes Sims  
 Will Downs

#### UP TO \$100

Adam Vetter  
 Adeline Wooliscroft  
 Andrew Freemire  
 Angela Tarasoff  
 Angie Macy  
 Annette DuBas  
 Annette Higby  
 Audrey Rosenbrock  
 Austin Agler  
 B.F. Christiaens  
 Barbara Ross  
 Beau Locken  
 Ben Gotschall  
 Ben Vig  
 Bessie Klose  
 Bill Krueger  
 Bill Midcap  
 Bill Wenzel  
 Bobby Green  
 Bonnie Geyer  
 Brad Pollard  
 Briana Green  
 Brittany Jablonsky  
 Bruce Miller  
 Bunny Johnston  
 Butternut Farm  
 Carol Peck  
 Carol Schooley  
 Chris Studer  
 Courtney Cowgill  
 Craig Myhre  
 Cynthia Crooks

Dan Downs  
 Dan McGuire  
 Dave Velde  
 David Heiens  
 David Rosen  
 Dawn Martin  
 Debra Harwood  
 Delisa Clampitt  
 Dennis Buse  
 Dennis Rosen  
 Diane Tiry  
 Don Sondrol  
 Donetta Benham  
 Donna Winburn  
 Elton Rathman  
 Erin Schneider  
 Eugene Haus  
 Fred Christensen  
 Gail Meisner  
 Gary Orman  
 Gayland Regier  
 George Davis  
 Gerard Steinlage  
 Giulio Menato  
 Glen Schmidt  
 Glenn Martinez  
 Harley Danielson  
 Jan Ahlen  
 Jan Kochis  
 Jana Linderman  
 Jeff Eschmeyer  
 Jeff Knudson  
 Jerry Lowry  
 Jessica Ratka  
 Jim Fredrickson  
 Jim Knopik  
 Joe Logan  
 Joel Keierleber  
 John Daughenbaugh  
 John Dunlop  
 John Ellis  
 John Lutz  
 Justamere Tree Farm  
 Kale VanBruggen  
 Kara Slaughter  
 Kathleen Box  
 Katie Fitzsimmons  
 Katie Peterman  
 Katsuhiko Saka  
 Kelli Bartscher  
 Ken Macy  
 Kimberly Jackson  
 Kristie Rutledge  
 Lauren Clary  
 Lavern Potuzak  
 LeAna Hug  
 Linda Larson

Lisa Blubaugh  
 Lynn Tappendorf  
 Marge Kilkelly  
 Margo Hamilton  
 MarthaVan Dale  
 Mary Howell  
 Maureen Shirley  
 Mike Oldham  
 Myron Blumhagen  
 Nathan Deke  
 Nick Levendofsky  
 Nila Wageman  
 Pam Musland  
 Patrece DeGeorgio  
 Patty Edelburg  
 Paul Schroeder  
 Pete McDaniel  
 Phillip Linderman  
 Phyllis Franzen  
 Phyllis Fry  
 Regina Jacobson  
 Rex Woollen  
 Richard Hauder  
 Rodney Allebach  
 Roger Wise  
 Ronald Meyer  
 Rose Buis  
 Sandi Christensen  
 Sandy Nordmark  
 Shannon Schweigert  
 Sharon Hovland  
 Sharri Cvancara  
 Sibyl Miller  
 Sidney Meidinger  
 Sigurd Rudie  
 Sue Arends  
 Tammy Austin  
 Terry Kirby  
 Tim Fink  
 Tina Hinchley  
 Tom Quinn  
 Vern Jantzen  
 Wayne Danielson  
 Wayne Fehd  
 Wes Niederman  
 Zach DeVoy  
 Zack Hamilton



